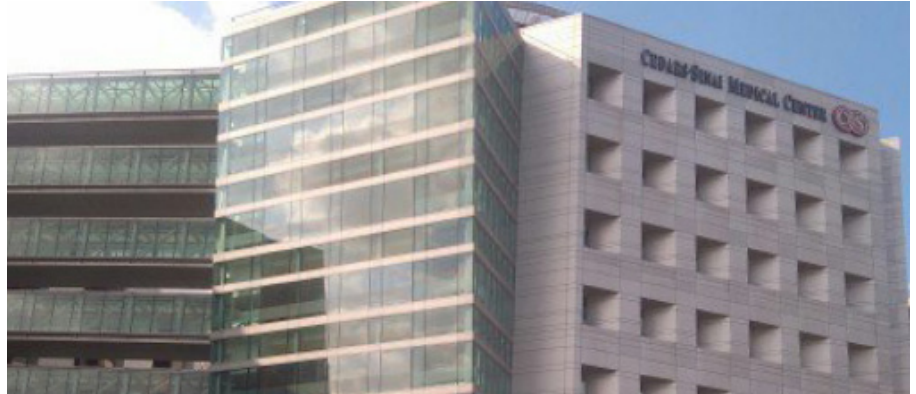


Cedars-Sinai North Care Tower

Since its inception in 1902, Cedars-Sinai Medical Center has evolved to become one of the largest non-profit hospitals in the western U.S. Kleinfelder has performed construction materials testing and inspection for Cedars-Sinai since 2003, completing more than 125 projects to date.

PROJECT RESULTS

Staffing the project with several full-time, multi-disciplined professionals, Kleinfelder served as a one-stop shop for testing and inspection services. This provided continuity and added cost savings for Cedars-Sinai on this high-profile endeavor, while reinforcing the value of this long-term client partnership.



STRESS AND SUSPENSE

The Cedars-Sinai North Care Tower—a new \$80 million, eight-story, 180-bed inpatient facility for intensive care patients—attaches to the existing facility through a suspended bridge. Under the direction of the project inspector of record, the architect of record, and Office of Statewide Health Planning and Development (OSPHD) officers, Kleinfelder provided materials testing laboratory and special inspection services for the tower's construction, observing general conformance to the approved plans and specifications and OSPHD guidelines.

STAFFED FOR STRUCTURE

With Kleinfelder's depth of resources, the team performed steel fabrication in five different locations across three states. In addition to supplying special inspectors for the structural steel fabrication in Stockton, California, Kleinfelder provided materials testing laboratory and special inspection services for all on-site work. This included concrete observation and testing, welding observation, masonry observation, spray-applied fireproofing, observation of epoxy-grouted anchors, reinforcing steel placement, pre-cast concrete, and high strength bolt installation observation and testing.

Location:

Los Angeles, California

Owner:

Cedars-Sinai Medical Center

